



PurrProp INSTRUCTIONS - Q&A:

1. Shaft, prop, rudder, etc., all need to be sanded to 80 grit, removing most old Antifoul from the surface, then dust down and finally wipe with down acetone.

2. Stir the BASE COAT/Etch Primer tin thoroughly (as pigments will settle in storage). Now add the Activator sachet contents to the tin and continue to stir well. Let it stand for 10 minutes to activate. Restir and apply the mixed PurrProp BASE COAT/Etch Primer with a very fine brush, making sure there are no missed areas, drips, runs, or dry spots in the coating. Once completely coated with the first coat, allow to tack off (no paint on your finger when touched), re-stir tin and apply a second coat using the remaining contents.

IMPORTANT!! The next stage is important for good adhesion of the Silicone CLEAR COAT.

4. When the second coat of PurrProp BASE COAT/Etch Primer becomes tacky (no paint will come off on your finger - see pictures following - this could take any time between 15 mins in summer to 1 hour in winter). Now apply the first coat of PurrProp CLEAR COAT using the fine brush. This will adhere to the BASE COAT/Etch Primer.

5. Once the first coat of CLEAR COAT is dry, then apply a second and final coat of PurrProp CLEAR COAT. This second coat can be applied at any time, even after the first coat has cured.

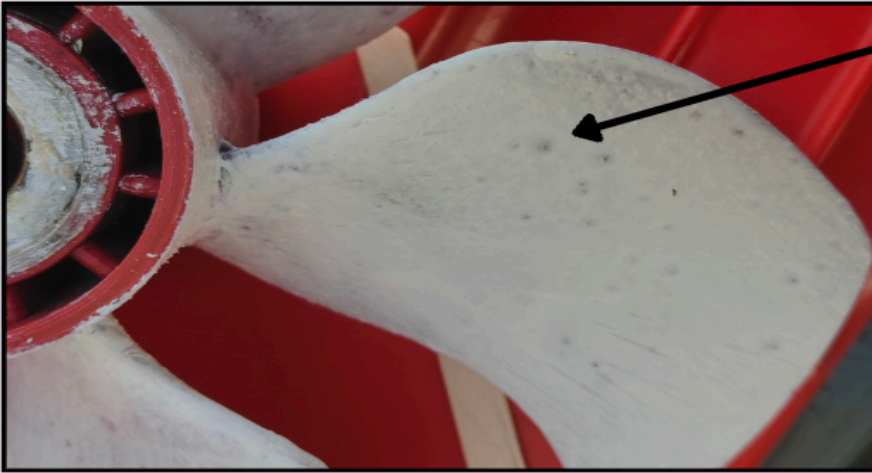
6. Make sure that both coats of PurrProp CLEAR COAT are applied glossy and smooth so there are no missed areas, runs, or drips in the coating, and it is important that you obtain a gloss surface from the fine brush.

7. After the last coat of PurrProp CLEAR COAT is applied, allow time for it to cure, leaving about 12 hours before launching.

For technical help, contact:

AA Composites International Pty Ltd. E: sales@aaci.au

1. What are the possible causes of the 'creater' marks on the prop when painting on Base Coat?



You can see the 'creater' marks in the base coat. Sort of indicates the surface is skinning before the solvents are released. Could happen in hot weather or direct sun on the propeller. Rectify by lightly sanding and applying another Base Coat.

2. What could causes the lines of separation when applying the first Silicone coat over the Base Coat (even though the Base Coat looked good?)



Base Coat would have been still sticky when the Silicone Clear Coat was applied over the top. For rectification: Surface can be sanded with 40 grit, and a new Base Coat applied and left to tack off. Then a new coat of Clear Coat can be applied.

